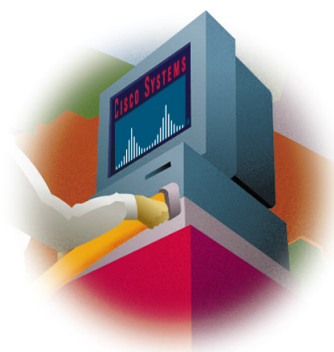


The Cisco Systems Logo Usage Program



WELCOME TO THE CISCO SYSTEMS LOGO USAGE PROGRAM. PARTICIPATION IN OUR

LOGO PROGRAM PROVIDES YOU WITH AN OPPORTUNITY TO USE THE CISCO SYSTEMS LOGO (“LOGO”) TO INDICATE THAT CISCO SYSTEMS IS A KEY VENDOR OR SUPPLIER OF YOUR COMPANY. BECAUSE THE CISCO SYSTEMS NAME AND LOGO REPRESENT THE HIGHEST QUALITY IN NETWORKING PRODUCTS AND SERVICES, THEY ARE VALUABLE PROPERTIES OF CISCO SYSTEMS, AND IT IS IMPORTANT THAT THEY BE USED PROPERLY.

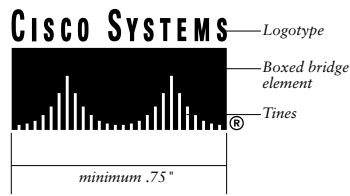


We’ve created this kit to help you use the Cisco Systems Logo correctly and effectively. Please review the following guidelines and policies regarding your use of the Logo. Except as expressly authorized in writing by Cisco, you may only use the Logo provided in this kit. *Your use of the Logo in your printed or electronic materials indicates your agreement to be bound by these conditions.*

The Cisco Systems Logo

The Cisco Systems Logo consists of the Univers font logotype appearing above the boxed bridge as shown in this document. Please use the camera-ready or soft-copy art provided by Cisco Systems in this Logo kit when reproducing the mark. You may not alter the Logo in any manner, including size, proportions, colors, elements, type, and so forth, or animate, morph, or otherwise distort its perspective or two-dimensional appearance.





Spot Color Four-Color Process



100C, 0M, 8.5Y, 65K



0C, 91M, 72Y, 23.5K



0C, 0M, 0Y, 100K



OK



NO



How to use the Cisco Systems Logo

The Cisco Systems Logo may be used in your collateral materials to indicate that Cisco Systems is a key vendor, partner or supplier of your company, or in the case of the press, to use with an article that features Cisco Systems.

You may use the Cisco Systems Logo in one of the following ways:

- In one-color printing, the Logo can be either black or PMS 3035 (deep blue). Four-color process match is acceptable.
- The preferred usage is two-color printing, using PMS 3035 (deep blue) for the boxed bridge element and PMS 187 (deep red) for the logotype or the equivalent CMYK (process match) colors as noted on this page. The vertical bridge tines should be the color of the paper you are printing on.
- The Logo may also be reversed out of a dark background.
- Do not use the Logo on a patterned background or on one that is too light or too dark to read well.

Where to use the Cisco Systems Logo

In all cases, your company logo should appear more prominently than the Cisco Systems Logo. The Cisco Systems Logo should be separated from your name and logo and any other company or product names and logos by the space of one mark width or one inch, whichever is greatest. The minimum mark size is 3/4" or two centimeters in length. Do not combine the Cisco Systems Logo with other logos or graphical elements. The correct trademark notices as described in this document must appear on all materials.

The Logo may be used only on your materials that make accurate references to the fact that Cisco Systems provides products or services to your company. The Logo may only be displayed adjacent to the reference or at the bottom of the same page on which the reference occurs. You may not display the Logo in any manner that implies Cisco Systems sponsorship, endorsement or license of your company, products, or services.

To use the Cisco Systems Logo on your Web site, please see the *Cisco Systems Logo Program for non-Cisco sites*.

Where not to use the Cisco Systems Logo and name

The Cisco Systems name or any potentially confusing variations may never be incorporated into the name of a product or service of your company.

The Cisco Systems Logo may not appear on the products and packaging for your company.

You may not use the Logo on any materials that disparage Cisco Systems or its products or services, that infringe upon any Cisco Systems intellectual property or other rights, or that violate any state, federal, or international law or regulation.

Trademark notices

Include the following notice on all materials in which the Cisco System name or Logo appear:

Cisco, Cisco Systems, and the Cisco Systems Logo are trademarks of Cisco Systems, Inc.

The symbol ® is included in the Cisco Systems artwork and should never be deleted from this artwork.

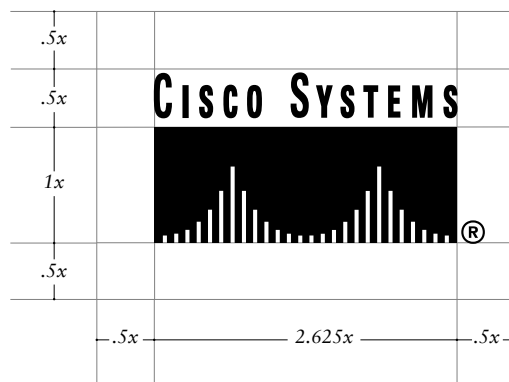
Review process

Cisco reserves the right to review, at any time, the contents of any advertisement, collateral, or promotion materials containing the Logo.

Terms and conditions

Nothing herein is intended to grant any right in the Logo other than the right to use the Logo in accordance with the requirements set forth herein. Cisco Systems reserves the right at any time in its sole discretion to terminate or modify the permission granted herein to use the Logo. Cisco Systems reserves the right to take action against any use that does not conform to these requirements, that infringes on Cisco Systems' intellectual property or other right, or that violates other applicable law.

Cisco Systems disclaims any and all warranties whether express or implied by law regarding the Logo, including without limitation, warranties against infringement.



CISCO SYSTEMS LOGO



Corporate Headquarters
Cisco Systems, Inc.
170 West Tasman Drive
San Jose, CA 95134-1706
USA
<http://www.cisco.com>
Tel: 408 526-4000
800 553-NETS (6387)
Fax: 408 526-4100

European Headquarters
Cisco Systems Europe s.a.r.l.
Parc Evolic, Batiment L1/L2
16 Avenue du Quebec
Villebon, BP 706
91961 Courtaboeuf Cedex
France
<http://www-europe.cisco.com>
Tel: 33 1 6918 61 00
Fax: 33 1 6928 83 26

Americas Headquarters
Cisco Systems, Inc.
170 West Tasman Drive
San Jose, CA 95134-1706
USA
<http://www.cisco.com>
Tel: 408 526-7660
Fax: 408 527-0883

Asia Headquarters
Nihon Cisco Systems K.K.
Fuji Building, 9th Floor
3-2-3 Marunouchi
Chiyoda-ku, Tokyo 100
Japan
<http://www.cisco.com>
Tel: 81 3 5219 6250
Fax: 81 3 5219 6001

Cisco Systems has more than 190 offices in the following countries. Addresses, phone numbers, and fax numbers are listed on the
Cisco Connection Online Web site at <http://www.cisco.com>.

Argentina • Australia • Austria • Belgium • Brazil • Canada • Chile • China (PRC) • Colombia • Costa Rica • Czech Republic • Denmark
Finland • France • Germany • Hong Kong • Hungary • India • Indonesia • Ireland • Israel • Italy • Japan • Korea • Malaysia • Mexico
The Netherlands • New Zealand • Norway • Philippines • Poland • Portugal • Russia • Singapore • South Africa • Spain • Sweden • Switzerland
Taiwan, ROC • Thailand • United Arab Emirates • United Kingdom • Venezuela

